



T-Gen

Resorbable Collagen Membrane

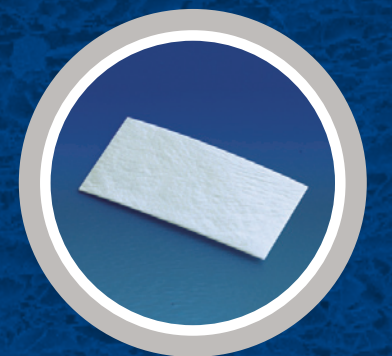
Ordering Information

Item Name	Type	Size
T-Gen	TG-4	15mm x 30mm
	TG-5	25mm x 25mm
	TG-6	15mm x 18mm



Manufacturer

162 GWAHAKSANEOP 3-RO, OCHANG, CHEONGWON, CHEONGJU, CHUNGBUK, KOREA
TEL : +82-43-240-8636 / FAX : +82-43-240-8699
www.skbioland.com



T-Gen

Resorbable Collagen Membrane



Advantage of the Product

Better handling

- Convenient usage regardless sides
- Fast hydration
- Excellent tensile strength
- Flexible adaptation to the defect

Better stability

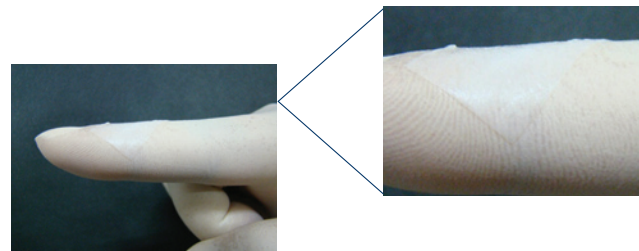
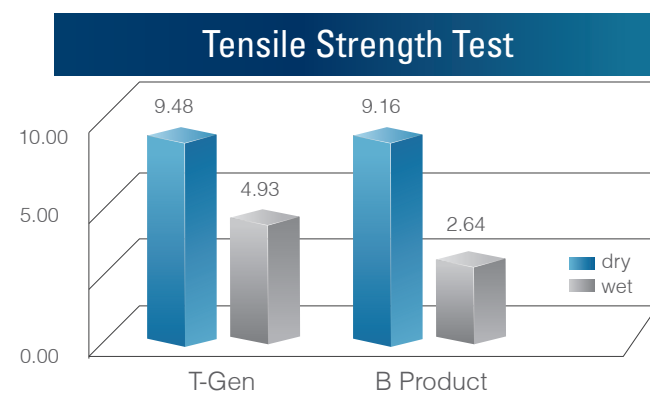
- Excellent tear resistance
- Prolonged barrier function and duration

Better tissue integration

- Excellent assistance for fast supply of bloods to the defect
- Lower incidence of a dehiscence

Product Comparison (T-Gen versus B product)

Better handling



T-Gen has excellent tensile strength and thus, it can perform better handling properties for tear resistance in surgery than other products. In addition, T-Gen can perform excellent adaptation to surface contour due to fast hydration and excellent flexibility.

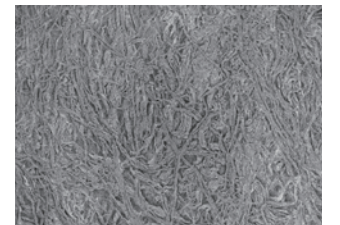
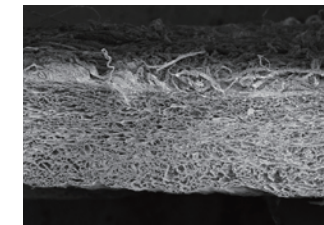
Better stability

Product	Biodegradable period
T-Gen	More than 3 months
B product	Within 2 months

T-Gen performs an excellent maintenance in the body with slow resorption. T-Gen provides a prolonged barrier function of more than 3 months compared to B product.

Better tissue integration

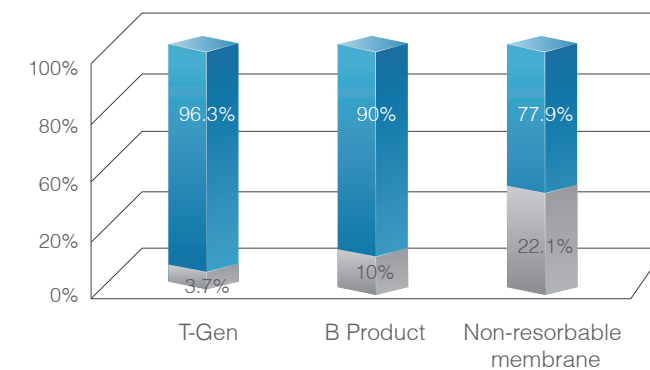
Product	Porosity	Total pore area
T-Gen	80%	16.2m ² /g
B product	54.3%	10.5m ² /g



[The cross-section view (T-Gen)]

[The plain view (T-Gen)]

T-Gen has high porosity and specific surface area, which support excellent blood supply. This enables T-Gen to perform optimal regeneration of bone and soft tissue.



T-Gen performs a significantly lower dehiscence incidence than other non-resorbable membranes or non-crosslinked membranes, when it is used to soft tissue healing treatment.

Dehiscence Defect

Case 1



Large buccal dehiscence defect



Covering of the augmentation area with T-Gen®

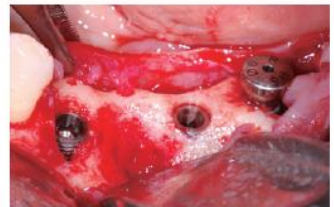


Satisfactory soft tissue formation



Excellent new bone formation after four months post-operatively

Case 2



Buccal dehiscence defect



Covering of the augmentation area with T-Gen®



Stable healing of soft tissue



Satisfactory new bone formation without tissue ingrowth after three months

Fenestration Defect

Case 1



Large buccal dehiscence defect and fenestration



Complete covering of the augmentation area with T-Gen®



Stable healing of soft tissue



Excellent Osseous integration showing after four months post-operatively

Case 2



Buccal bone fenestration



Complete covering of the augmentation area with T-Gen®



Satisfactory soft tissue healing



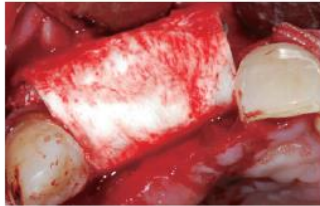
Perfect bony healing after four months

Horizontal Augmentation

Case



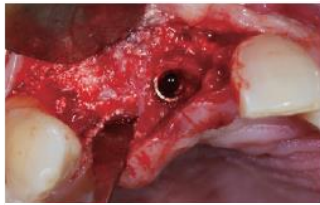
Horizontal bone defect



Complete covering of the augmentation area with T-Gen®



Satisfactory soft tissue formation with volume maintenance



Excellent new bone formation in secondary surgery

Ridge Reconstruction

Case



Large bone defect around immediate implant installation



Complete covering with T-Gen® in the alveolar augmentation site



Stable soft tissue formation with volume maintenance



Excellent Osseous integration showing after four months

Ridge Preservation

Case



Bone defect showing around immediate implant insertion



Complete covering with T-Gen® For ridge augmentation



Stable condition of soft tissue



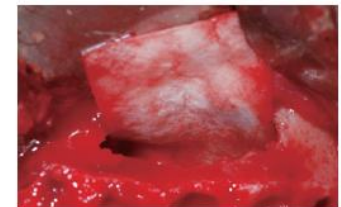
Perfect bone regeneration after four months post-operatively

Sinus Perforation

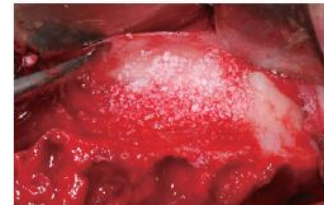
Case



Perforation in lateral site



Place T-Gen® into the sinus cavity



Covering T-Gen® in the augmentation site



Perfect soft tissue condition with stable volume maintenance after six months